



TAKE A STAND FOR
HUMAN RIGHTS
REGIONAL PROTECTION FACILITY

GRASSROOT INITIATIVE FOR
STRENGTHENING COMMUNITY RESILIENCE

ANNUAL REPORT

2025

 info@giscor.org


 www.giscor.org

TABLE OF CONTENTS



01	Message from Executive Director
02	Executive Summary and Key Figures
03	2025 Highlight
04	Who we are
05	Core Values
06	Cross-cutting Approaches
07	Humanitarian Context 2025
08	Sectorial Expertise
09	Humanitarian Coordination
10	Geographical Coverage
12-34	Program Implementation
35	M&E
36	Acknowledgments
37	Success Stories
38	16 Days of Activism
39	End of the year 2025 Celebration
40	10 Years Anniversary
41	Strengthening Accountability Through Field Monitoring and Community Engagement
42	Partnerships And Collaboration



FOLLOW US: GISCOR    

CONTACT US

-  info@giscor.org
-  www.giscor.org

Plot No 174 Adamawa Street, off Damboa Road,
Opp: Nane and Boi Hotel Extension, Maiduguri,
Borno State, Nigeria



MESSAGE FROM EXECUTIVE DIRECTOR



As we reflect on the year 2025, I am pleased to present the GISCOR Annual Report, which captures our collective efforts, achievements, and the impact we have made across Borno, Adamawa, Yobe, Katsina, Zamfara, and Sokoto States. This report highlights our commitment to addressing urgent humanitarian needs while advancing sustainable development initiatives that strengthen resilience and improve the well-being of vulnerable communities. This year has been defined by both significant progress and continued humanitarian challenges affecting the communities we serve.

Despite the complex operating environment, GISCOR remained committed to delivering timely, quality, and life-saving interventions across our core sectors of Protection, WASH, Health, Nutrition, Education, Food Security and Livelihoods. Beyond humanitarian response, GISCOR continues to promote development-oriented programming aimed at creating durable solutions and strengthening community resilience.

Through strong community engagement, dedicated field teams, and strategic partnerships, we reached vulnerable populations including internally displaced persons, returnees, refugees, and host communities with integrated services that not only address immediate needs but also support long-term recovery, self-reliance, and sustainable development.

Our Protection interventions continued to prioritize case management, protection monitoring, community-based protection mechanisms, and support for vulnerable individuals, ensuring that the voices of those most at risk were heard and acted upon. In the WASH sector, we improved access to safe water, sanitation facilities, and hygiene promotion services, contributing to reduced risks of waterborne diseases and improved public health outcomes. Our Health and Nutrition interventions strengthened service delivery at both facility and community levels, enhancing access to quality healthcare and nutrition services for vulnerable populations. Through Food Security and Livelihoods activities, we supported households to restore productive capacities, improve income opportunities, and build resilience against future shocks. Our education interventions further contributed to creating safer and more inclusive learning environments for children affected by conflict and displacement.

These achievements would not have been possible without the unwavering support of our donors, implementing partners, government counterparts, traditional leaders, and community stakeholders. I extend my sincere appreciation for their trust, collaboration, and shared commitment to improving the lives of vulnerable populations. Most importantly, I commend our dedicated staff and volunteers whose resilience, professionalism, and commitment enabled us to deliver assistance under often challenging and complex circumstances.

As we move forward, GISCOR remains committed to strengthening accountability, enhancing program quality, expanding partnerships, and increasing our reach to underserved and vulnerable communities. We will continue to adapt to evolving humanitarian and development needs while maintaining a strong focus on sustainability, localization, community ownership, and the pursuit of durable solutions that empower communities to thrive long after humanitarian assistance has ended.

Mr. Kaumi Wakil

**EXECUTIVE DIRECTOR
GISCOR**

Together, we are building stronger, safer, healthier, and more resilient communities.



EXECUTIVE SUMMARY

In 2025, GISCOR continued to deliver integrated humanitarian and developmental interventions across crisis-affected communities in Nigeria. Operating in Borno, Adamawa, Yobe, Katsina, Zamfara, and Sokoto States, the organization responded to the urgent needs of internally displaced persons (IDPs), returnees, and vulnerable host communities affected by conflict, displacement, food insecurity, and limited access to essential services.

Through strong partnerships with UN agencies, government institutions, humanitarian actors, networks of civil society and local community structures, GISCOR implemented multi-sectoral programs focused on Protection, Water, Sanitation and Hygiene (WASH), Health and Nutrition, Livelihoods support, CCCM/shelter, digital literacy, mine action, MHPSS and FLS.

Over 1 million individuals were reached through life-saving assistance and community resilience interventions. Key achievements included strengthening protection monitoring systems, expanding access to safe water and sanitation, supporting healthcare & nutrition services, education, promoting community engagement, and reinforcing accountability mechanisms.

GISCOR also expanded its operational presence into underserved and hard-to-reach areas while strengthening localization approaches through community participation, capacity-building initiatives, and the engagement of community-based structures.

Despite operational challenges such as insecurity, access limitations, and resource constraints, the organization continued to adapt through innovative approaches including remote monitoring, integrated programming, and community-led response mechanisms.

The achievements highlighted in this report reflect GISCOR's continued commitment to delivering accountable, inclusive, and community-centered humanitarian assistance while supporting long-term recovery and resilience.

KEY FIGURES 2025

Total People Reached



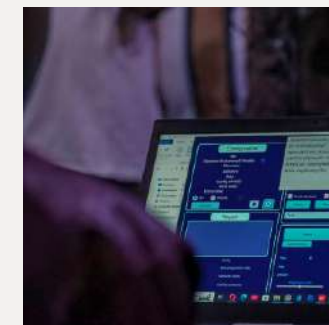
1,056,270

Individuals



Males
451,521

Females
604,749



National Staffs

480

6 States

Total Projects

10



HIGHLIGHT OF THE 2025 YEAR

The year 2025 marked a significant expansion of GISCOR's humanitarian response across Borno, Adamawa, Yobe, Katsina, Zamfara, and Sokoto States, with strengthened programming, deeper community engagement, and improved service delivery across all sectors.

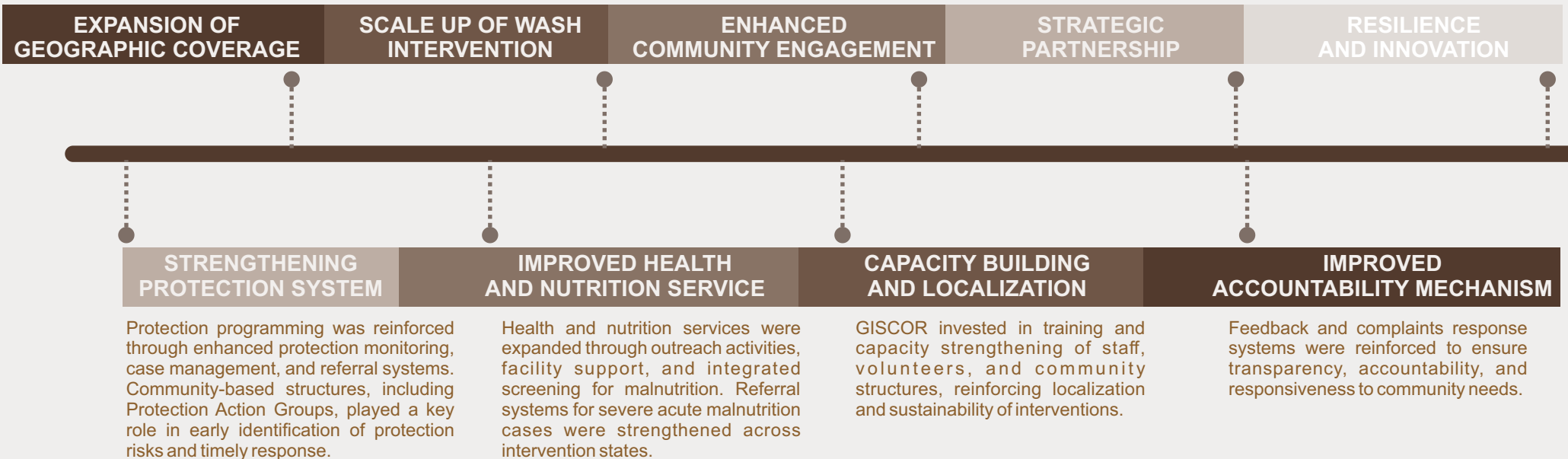
GISCOR expanded its operational footprint to reach more hard-to-reach and underserved communities, including newly accessible settlements in Northwest Nigeria, while maintaining strong presence in Northeast Nigeria.

Significant improvements were recorded in access to safe water and hygiene services through rehabilitation of water points, hygiene promotion campaigns, and water quality monitoring activities in both IDP and host communities.

Community participation was deepened through awareness sessions, feedback mechanisms, and inclusion of local stakeholders in planning and implementation, ensuring more community-driven responses.

The organization strengthened collaboration with key partners, including UN agencies, international NGOs, Networks of civil society, government counterparts, improving coordination and resource efficiency across sectors

Despite operational challenges, GISCOR adapted through innovative approaches such as remote monitoring, community-led reporting systems, and integrated multi-sectoral responses.



OUR ORGANIZATION

GISCOR is a national humanitarian and development organization committed to improving the lives of vulnerable populations affected by conflict, displacement, and poverty across Nigeria. The organization works in close collaboration with government institutions, UN agencies, international NGOs, and local communities to deliver integrated, accountable, and community-driven responses.

Over the years, GISCOR has grown into a multi-sectoral organization implementing programs in **Protection, Water, Sanitation and Hygiene (WASH), Health and Nutrition, Livelihoods support, CCCM/shelter, digital literacy, mine action MHPSS and FLS**. Our interventions are designed to address both immediate humanitarian needs and longer-term resilience building for internally displaced persons (IDPs), refugees, returnees, and host communities.

GISCOR operates across multiple states in Nigeria, including **Borno, Adamawa, Yobe, Katsina, Zamfara, and Sokoto**, with strong field presence in hard-to-reach and underserved areas. Our approach is grounded in community participation, ensuring that affected populations are actively engaged in the design, implementation, and monitoring of interventions.

Through a dedicated team of professionals and volunteers, GISCOR continues to strengthen local systems, promote accountability, and support sustainable recovery and development in crisis-affected communities.



WHO WE ARE

GISCOR is a Nigerian-led humanitarian and developmental organization working to deliver life-saving and resilience-focused interventions to vulnerable populations in conflict-affected and fragile settings.

VISION

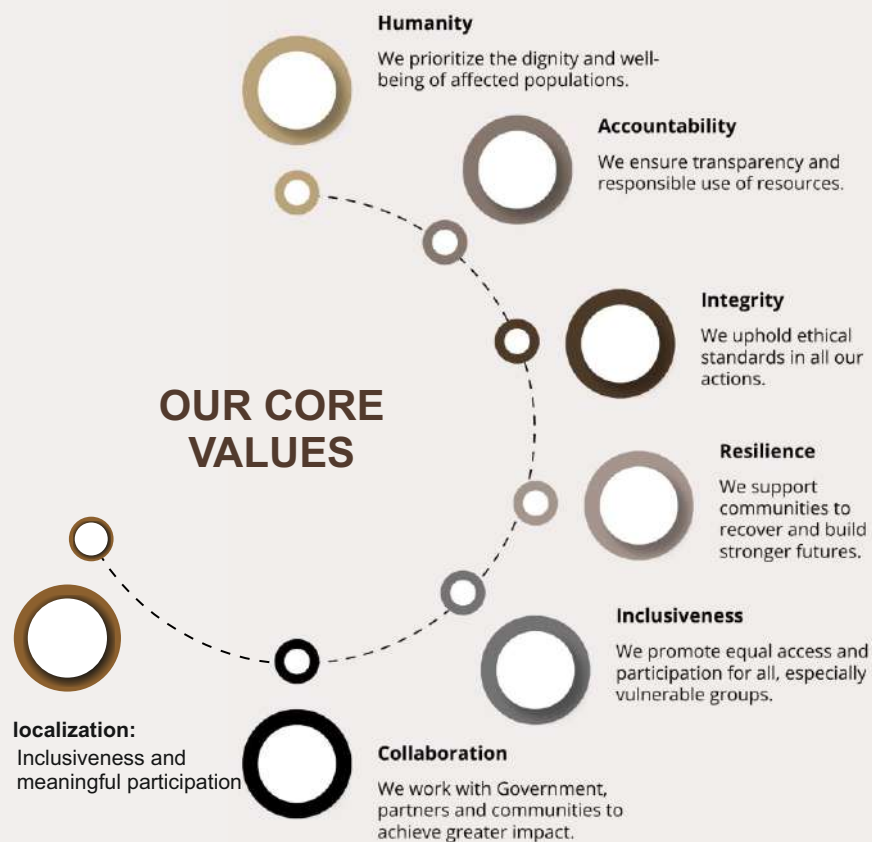
To empower conflict affected communities to become resilience enough to prepare for, effectively respond to, and efficiently recover from crises with dignity and independence.

MISSION

Our mission is to foster self-reliance among displaced populations and ensure dignified access to essential needs during crises by providing multi-sectoral interventions guided by humanitarian principles.



EMPOWERING LOCAL SYSTEMS FOR SUSTAINABLE HUMANITARIAN RESPONSE AND RECOVERY



Localization and community engagement remain central to GISCOR's humanitarian and development approach as a nationally led organization. GISCOR believes affected communities are active partners in identifying needs, shaping responses, and promoting sustainable recovery and resilience.

Throughout 2025, GISCOR strengthened community participation across assessments, planning, implementation, and monitoring activities. Community leaders, women groups, youth representatives, persons with disabilities, and local structures played key roles in identifying priorities, addressing protection concerns, and supporting accountability mechanisms.

The organization strengthened several community-based structures, including Protection Action Groups (PAGs), Community-Based Protection Networks (CBPNs), GBV and Child Protection Committees, CCCM committees, health and nutrition groups, Mother-to-Mother (M2M) support groups, hygiene promoters, FSL groups, and volunteer networks. These structures improved community ownership, referral pathways, early risk identification, and sustainability of interventions.

GISCOR also invested in the capacity strengthening of local actors, frontline workers, CSOs, and cooperative groups through training, mentorship, technical support, and small grants. Trainings focused on humanitarian and development principles, protection mainstreaming, accountability, safeguarding, gender equality, and sector-specific programming.

Community engagement mechanisms such as awareness sessions, focus group discussions, community consultations, and feedback and complaints systems ensured that interventions remained inclusive, accountable, and responsive to the needs of affected populations, particularly women, children, persons with disabilities, and other vulnerable groups.

Through this localization approach, GISCOR continues to strengthen community resilience, local leadership, and sustainable humanitarian and development responses across its areas of operation.

CROSS-CUTTING APPROACHES

Accountability to Affected Populations (AAP)

GISCOR strengthened feedback and complaints mechanisms to ensure communities remained informed, engaged, and able to provide feedback safely.

Protection principles were integrated across all interventions to ensure safe, inclusive, and dignified access to services.

Protection Mainstreaming

Gender and Inclusion

Programs promoted equal participation and prioritized the needs of women, children, persons with disabilities, and other vulnerable groups.

GISCOR reinforced Prevention of Sexual Exploitation, Abuse, and Harassment (PSEAH) measures through staff training, community awareness, and reporting mechanisms.

PSEA/PSEAH

Localization

The organization continued to strengthen local systems and community ownership through partnerships with local actors and community structures

HUMANITARIAN CONTEXT IN 2025

Nigeria continued to face complex humanitarian challenges in **2025**, particularly across the Northeast and Northwest regions. Conflict, displacement, food insecurity, climate-related shocks, and economic pressures continued to affect millions of people.

Communities in **Borno**, **Adamawa**, and **Yobe** States remained affected by displacement, protection risks, limited access to basic services, and food insecurity. In Northwest Nigeria, insecurity and vulnerability further increased humanitarian needs among affected populations.

Women, children, persons with disabilities, and other vulnerable groups remained disproportionately affected by protection risks, malnutrition, inadequate healthcare, and poor access to safe water and sanitation.

Against this backdrop, **GISCOR** continued to deliver integrated humanitarian interventions aimed at saving lives, protecting dignity, and strengthening community resilience.



SECTORS OF EXPERTISE

PROTECTION

GISCOR delivers community-centered protection across Northeast and Northwest Nigeria by conducting household risk monitoring, operating community Protection Desks for cross-sectoral referrals, and training local security forces on human rights standards. Operational activities integrate a survivor-centered GBV response across eight Women and Girls Safe Spaces (WGSS)—delivering clinical case management, psychosocial support, dignity kit distributions, and livelihood skills training—with targeted Child Protection operations including Best Interest Assessments (BIA/BID), the management of eight Child-Friendly Spaces (CFS), and Family Tracing and Reunification (FTR) workflows. Additionally, GISCOR runs life-saving Explosive Ordnance Risk Education (EORE) safety campaigns during routine outreach, training returnees and displaced populations to recognize, avoid, and report explosive hazards.

WASH

GISCOR addresses public health and environmental living conditions by training Community-Based Hygiene Promoters (CBHPs) to lead behavior-change campaigns. Field activities focus on essential infrastructure upkeep, waste management, drainage clearing, facility rehabilitation, and the distribution of core hygiene and Menstrual Hygiene Management (MHM) kits.

NUTRITION

Partnering to improve child survival and caregiver well-being, GISCOR prevents and treats acute malnutrition through Stabilization Centres (SC) and Outpatient Therapeutic Programmes (OTP). The approach integrates community-led MUAC screenings for early detection, Blanket Supplementary Feeding Programmes (BSFP), Infant and Young Child Feeding (IYCF) counseling, and Mother-Baby Stimulation Corners (MBCs).

HEALTH

GISCOR delivers life-saving primary healthcare across fourteen service health facilities and a mobile clinic. Programming covers outpatient consultations, comprehensive maternal and child health (ANC/PNC, family planning, skilled birth attendance), and Clinical Management of Rape (CMR). Key outcomes include increasing health worker competency from 25–35% to over 65% and maintaining a zero stock-out record for essential medicines.

CCCCM

GISCOR operationalizes area-based site management across camp and out-of-camp locations. Dedicated monitors run Information Coordination Centres (ICCCs), map multi-sectoral service gaps, and manage site reception and pre-registration workflows. Governance structures are systematically reformed to prioritize equity, targeting 45% female representation in leadership.

FOOD SECURITY & LIVELIHOODS

Addressing acute food insecurity, GISCOR provides emergency food assistance through General Food Distributions (GFD) and Cash-Based Transfers (CBT)/e-vouchers. These programs stabilize consumption, reduce negative household coping strategies, and maintain strong community trust and transparency through functional Complaint and Feedback Mechanisms (CFM).

EDUCATION

Promotes access to education and digital inclusion through digital skills training, technology-driven learning, and community empowerment initiatives. We uses technology and awareness programs to help prevent and combat sexual violence in hard-to-reach areas and host communities. Through targeted interventions, GISCOR trains community members and school students on digital literacy, Digital Marketing and Self Reliance Skills and online safety, protection awareness, and the responsible use of technology to strengthen resilience, protection, and self-reliance.

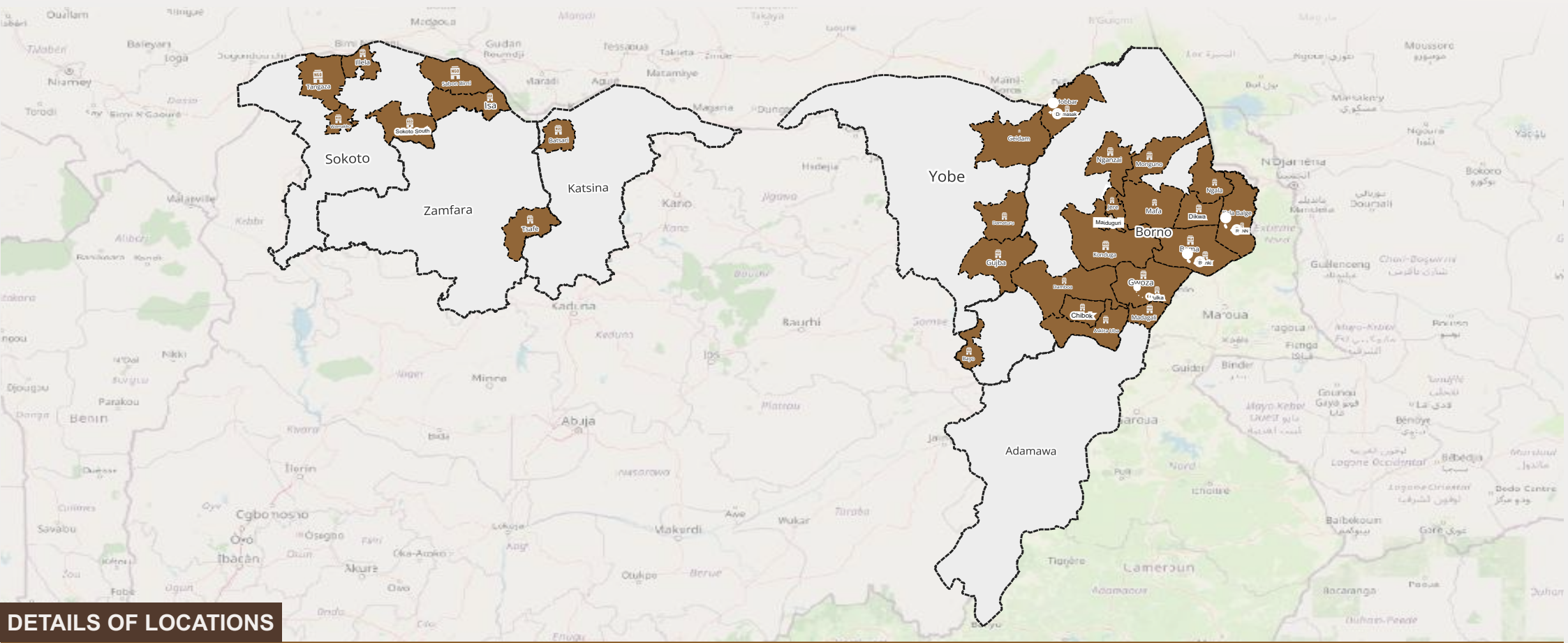


Multi-Sectoral Humanitarian Coordination

GISCOR prioritized inter-agency collaboration and multi-sectoral coordination as a key pillar for delivering an effective, efficient, and dignified humanitarian response. The organization worked closely with government ministries, local authorities, and humanitarian partners to strengthen coordination, reduce duplication of efforts, and improve the reach and quality of humanitarian services. GISCOR actively participated in regular coordination mechanisms across key sectors, including Protection, Health, Nutrition, WASH, CCCM, FSL, and Education sectors, as well as the Protection Area of Responsibility sub-sectors on Gender-Based Violence and Child Protection. Through these platforms, GISCOR consistently attended coordination meetings, shared operational updates, and contributed to joint planning and response harmonization across sectors. As part of its coordination responsibilities, GISCOR maintained regular reporting to the respective sectors, ensuring timely submission of field data, situation updates, 5Ws, and activity info's reports. This strengthened evidence-based planning, improved situational awareness, and supported more effective inter-agency decision-making at both sub-national and national levels. In hard-to-reach and underserved areas where UNHCR had limited or no physical presence, GISCOR played a critical coordination role by supporting the facilitation of Protection Sector Working Group meetings. This ensured continuity of coordination structures and sustained information flow between field locations and higher-level coordination platforms. In addition, GISCOR maintained strong collaboration with government ministries, departments, and agencies, as well as traditional and community leadership structures. These engagements supported joint planning, improved community ownership, and ensured alignment of interventions with local priorities and humanitarian standard



Geographical Coverage



DETAILS OF LOCATIONS

PROTECTION	GBV	CHILD PROTECTION	CC & CM	MINE ACTION	WASH	FOOD SECURITY & LIVELIHOOD	HEALTH	NUTRITION	SAFETY & SECURITY	EDUCATION (Digital Literacy)
UNHCR Borno: Banki, Damasak, Damboa, Diwa, Gwoza, Jere, Maiduguri, Kukawa, Malam Bafiri, Cross, Kawau, Doron Baga, Ngala, Monguno, Pulka ADAMAWA Madagali YOBE Damaturu, Geidam, Gujba USG (OHA) Borno: Bama, Jere, Maiduguri, Monguno IRC Sokoto: Sokoto South, Isah, Sabon Biri ZAMFARA Tsafe KATSINA Batsari DRC Sokoto: Sokoto South, Isah, Sabon Biri	UNHCR Borno: Damasak ADAMAWA Madagali USG (OHA) Borno: MMC, Jere, Monguno, Bama IRC Sokoto: sokoto south, sabon biri, isah ZAMFARA Tsafe KATSINA Batsari DRC Borno: Monguno, Konduga	UNHCR Borno: Damasak, Ngala, Monguno ADAMAWA Madagali GISCOR Borno: Bama, Monguno IRC Sokoto: sokoto south, sabon biri, isah ZAMFARA Tsafe KATSINA Batsari	UNHCR Borno: Bama, Damasak, Ngala, Monguno GISCOR Borno: Bama, Monguno IRC Sokoto: sokoto south, sabon biri, isah ZAMFARA Tsafe KATSINA Batsari	NHF Borno: Bama, Diwa GISCOR Borno: Banki, Ngala, Damasak, Pulka, Gwoza, Monguno, Jere, MMC, Yobe: Damaturu, Gujba, Geidam	DRC Borno: Nganzi ZOA Borno: Bama, Monguno MSF Sokoto: Isah DRC Sokoto: Isah	WFP Borno: Diwa, Mafa, Rann SOKOTO Rabai, Tangaza, Ilala CAID Borno: Diwa, Mafa, Rann ZOA Borno: Monguno, MMC, Jere FAO Borno: Damasak, MMC, Jere, Bama, Pulka, Gwoza, Banki, Ngala, Diwa, Monguno, Sokoto: Rabai, Tangaza, Wamako	MDM Borno: Damasak NHF, DRC, PUI Borno: Monguno	DRC Borno: Manguno, Konduga WFP Borno: Mafa, Rann, Diwa PUI, NHF Borno: Monguno	UNDP - RSF Yobe: Gulbi, Buni Yadi, Malandari BORNO Mafa (Ngannaram), Pulka, Gwoza, Banki, Damasak, Ngala (Logorani), Damboa ADAMAWA Gulak, Sukur, Waga	ZOA Borno: Jere, MMC BSF Adamawa: Madagali Sokoto: Sokoto South

Production Date: 01 November 2025
 Data Sources: GISCOR

Produce by: GISCOR INFORMATION UNIT 2025



The designations and Geography used on this map do not imply official endorsement or acceptance by the partners supporting the creation of this product.



PROGRAM IMPLEMENTATION OVERVIEW

In 2025, GISCOR continued to implement integrated humanitarian interventions across Northeast and Northwest Nigeria, responding to the urgent needs of conflict-affected and vulnerable populations. Through coordinated multi-sectoral programming, the organization strengthened access to protection services, safe water and sanitation, healthcare, nutrition support, and community resilience initiatives.

Programs were implemented in close collaboration with government stakeholders, humanitarian partners, community structures, and local authorities to ensure effective, accountable, and community-centered service delivery.



PROTECTION



In partnership with the United Nations High Commissioner for Refugees (UNHCR), the United States Government through Office of Humanitarian Assistance (OHA) Nigeria, and the Danish Refugee Council (DRC), International Rescue Committee (IRC) led consortium, GISCOR recruited and deployed a dedicated team of protection monitors across the North-East and North-West regions. These monitors conducted continuous, real-time tracking of human rights and safety trends across all target locations. Through this collaborative framework, GISCOR delivered multi-sectoral humanitarian aid designed specifically for internally displaced persons (IDPs), refugees, returnees, asylum seekers, and vulnerable host families navigating highly volatile, crisis-affected environments.

Through sustained field presence and active community engagement, GISCOR conducted protection monitoring using Harmonize Households Assessment Tool HHA to identify protection risks and urgent humanitarian needs affecting vulnerable populations, including women, children, older persons, persons with disabilities, and displaced households experiencing psycho-social distress, food insecurity, and inadequate shelter conditions. The organization facilitated referrals to specialized and life-saving services, including healthcare, psychosocial support, WASH, food assistance, shelter, livelihoods, and other critical support services, thereby strengthening access to assistance and improving the well-being of affected populations.

Giscor manage and maintained 27 Protection Desks established within communities continued to serve as safe entry points for reporting protection concerns, seeking information, and accessing referral pathways. These community-based mechanisms reflected growing trust among affected populations and contributed to improved reporting, timely response, and enhanced access to protection services. GISCOR also established and strengthened Community-Based Protection Structures using the Age, Gender, and Diversity (AGD) approach to ensure the meaningful participation and representation of women, youth, older persons, persons with disabilities, and other vulnerable groups in community protection processes and decision-making.

To strengthen local protection systems and promote rights-based approaches, GISCOR conducted regular community sensitization and awareness-raising sessions on key protection issues, peaceful coexistence, displacement-related risks, and available support mechanisms. The organization engaged community leaders, local authorities, and humanitarian stakeholders to enhance coordinated protection responses and foster social cohesion. Community members were further sensitized on durable solutions and displacement response frameworks to improve understanding of their rights, protection risks, and available services.

PROTECTION

Recognizing the critical role of local security actors in community protection, GISCOR trained members of the Civilian Joint Task Force (CJTF), police personnel, Nigeria Security and Civil Defence Corps (NSCDC), and military personnel on protection principles, human rights standards, conflict mitigation, and civilian-centered approaches to security. These capacity-strengthening efforts contributed to improved coordination, accountability, and more protection-sensitive responses within affected communities.

Beyond protection activities, GISCOR implemented complementary humanitarian interventions aimed at restoring dignity and improving living conditions among vulnerable populations.

We conducted WASH sensitization activities that promoted hygiene awareness, disease prevention, environmental sanitation, and safe water practices. In addition, GISCOR distributed Non-Food Items (NFIs), hygiene kits, and shelter improvement materials to displaced persons, returnees, and vulnerable host community members, reducing exposure to protection risks and enhancing the dignity and resilience of beneficiaries.

Despite persistent challenges, including insecurity, recurrent displacement, food insecurity, limited livelihood opportunities, and inadequate access to basic services, GISCOR's interventions achieved significant results in improving the safety, dignity, protection, and resilience of vulnerable populations across Northeast and Northwest region. Through its integrated and community-centered approach, GISCOR continues to play a vital role in strengthening protection systems, improving access to life-saving assistance, promoting social cohesion, and supporting conflict-affected communities to rebuild safer and more resilient lives.



CCCM

GISCOR operationalist area-based site management activities across both in-camp and out-of-camp settings in Ngala, Banki, Monguno, Damasak, Damaturu, Gujba, and Madagali. Dedicated CCCM monitors managed Information Coordination Centres (ICCCs) to streamline community access to critical sector data, facilitated reception and pre-registration workflows for household support, and conducted routine multi-sectoral service mapping. These assessments identified urgent gaps and directly informed local advocacy efforts, while staff consistently monitored service delivery to ensure compliance with humanitarian standards.

Central to the operation was the restructuring of camp governance frameworks using an Age, Gender, and Diversity (AGD) approach to promote equity and representation. Community leadership structures were established and reinforced with a target of achieving 45% female representation, while specialized outreach teams focused on the identification and referral of persons living with disabilities and specific needs. Furthermore, GISCOR prioritized localized capacity sharing by organizing structured training sessions on core CCCM practices, protection mainstreaming, Gender-Based Violence (GBV), and Prevention of Sexual Exploitation and Abuse (PSEA) for staff, volunteers, and camp stakeholders.



Mine Action (EORE)

With the support of UNMAS integrated Explosive Ordnance Risk Education (EORE) We are into both standalone awareness activities and broader protection outreach sessions conducted across target communities. Recognizing the continued risks posed by explosive remnants of war in conflict-affected areas, the organization used community engagement platforms such as protection action groups and trained staffs to raise awareness on the identification of potential explosive hazards, safe behavior practices, and appropriate reporting mechanisms. EORE messages were delivered through community sensitization sessions, protection awareness activities, and engagement with community structures, enabling a wider reach among internally displaced persons, returnees, and other vulnerable populations. By integrating EORE into existing protection programming, GISCOR ensured that community members received essential safety information alongside broader protection messages, helping to strengthen individual and community awareness of explosive ordnance risks.

Where concerns or reports relating to suspected explosive hazards were raised by community members, information was documented and shared with relevant stakeholders and partners through available coordination mechanisms. This integrated approach contributed to improving community awareness, promoting safer behaviors, and supporting efforts to reduce exposure to explosive ordnance risks in affected communities.



GENDER BASE VIOLENCE

In collaboration with UNHCR, NHF, USG/OHA, IRC, and DRC, we implemented comprehensive Gender-Based Violence (GBV) prevention and response interventions across the North-East and North-West regions of Nigeria. The initiative began with setting up and operationalizing Women and Girls' Safe Spaces (WGSS) within the target communities. These spaces provided secure, inclusive environments where women and girls could safely access protection services, psychosocial support, and tools for personal advancement.

Through these safe spaces, GISCOR delivered survivor-centered case management services. This included identifying GBV survivors, providing psychosocial first aid, offering professional counseling, conducting follow-up assessments, and facilitating referrals to specialized medical, legal, shelter, and protection services. Both individual and group counseling sessions were regularly organized to help survivors and vulnerable women and girls heal from trauma and restore their emotional well-being.

To reinforce prevention efforts, GISCOR routinely conducted community awareness and sensitization campaigns. These sessions aimed to deepen local knowledge on GBV prevention, showcase available support services, map out referral pathways, and clarify safe reporting mechanisms. The campaigns actively engaged women, men, adolescent girls and boys, traditional leaders, and key stakeholders to drive behavioral change and build safer community environments.



GENDER BASE VIOLENCE

Recognizing economic vulnerability as a key driver of risk, GISCOR enrolled women and girls in vocational skills acquisition programs and financial literacy courses. These efforts were designed to strengthen livelihoods and foster long-term economic independence. Participants received practical training in small business management, budgeting, product marketing, and savings strategies.

To address the intersection of education and protection, we provided non-formal education classes for out-of-school girls and women, focusing on foundational literacy, numeracy, and essential life skills. Furthermore, the organization built the capacity of women's groups and local networks to advocate for women's rights, champion the Prevention of Sexual Exploitation and Abuse (PSEA), and sustain community-led protection structures.

GISCOR maintained an active presence in coordination meetings and protection forums to strengthen local referral networks, address emerging GBV trends, advocate for risk mitigation across all sectors, and enhance synergy among humanitarian actors. Through these interconnected interventions, we successfully expanded access to quality GBV services, upheld the dignity and empowerment of women and girls, and cultivated safer, more protective communities.



Groundnut Cake Making.



Groundnut Oil Extraction



GISCOR, in partnership with UNHCR, NHF, USG/OHA, and IRC, implemented comprehensive Child Protection interventions across the North-East and North-West regions, to strengthen the protection, safety, resilience, and well-being of conflict-affected and vulnerable children. The response commenced with the establishment and operationalization of Child-Friendly Spaces (CFS), which provided safe, inclusive, and child-centred environments where children could access psychosocial support, participate in structured recreational and educational activities, and regain a sense of normalcy amidst crisis and displacement.

Through the Child-Friendly Spaces, children engaged in age-appropriate activities such as sports, creative play, storytelling, singing, dancing, arts and crafts, and life-skills sessions designed to promote emotional healing, social interaction, learning, and positive coping mechanisms. Caregivers were also engaged through awareness sessions and supportive activities aimed at strengthening family relationships and enhancing children's overall well-being.

GISCOR established and strengthened Community-Based Child Protection Committees (CBCPCs) to enhance community ownership of child protection interventions and facilitate the early identification, reporting, and referral of children facing protection risks. These community structures played a vital role in raising awareness, monitoring child protection concerns, and supporting timely responses to cases of abuse, neglect, exploitation, violence, family separation, and other child protection concerns.

The organization implemented structured child protection case management services to identify, assess, and respond to the needs of vulnerable children. Individualized case plans were developed based on the best interests of the child, while regular follow-up visits ensured continuity of care and responsive support. Appropriate referrals and case transitions were facilitated to enable children and their caregivers to access specialized services whenever required.

Family tracing, reunification, and alternative care interventions were undertaken to support unaccompanied, separated, and orphaned children. Efforts focused on restoring family unity whenever possible and ensuring that children without parental care were placed in safe and protective alternative care arrangements guided by child protection principles and standards.



CHILD PROTECTION

Mental Health and Psychosocial Support (MHPSS) remained a key component of the intervention. Individual and group counselling sessions helped children and caregivers cope with trauma, stress, and the psychological impact of conflict and displacement. Sessions on positive parenting, child safety, stress management, prevention of bullying, child rights, and personal hygiene further strengthened protective family and community environments.

To promote access to education and reinforce protective learning environments, GISCOR implemented Safe School initiatives and Kids' Club activities. These interventions encouraged school participation, fostered social cohesion and inclusion, promoted awareness of children's rights, and empowered children to actively contribute to creating safer and more supportive school communities.

In addition, GISCOR strengthened the capacity of child protection actors and community structures through training and mentorship on child protection case management, information management, and child safeguarding principles. The organization also worked closely with relevant stakeholders to improve coordination, accountability, referral pathways, and the quality of services provided to vulnerable children.

Through these integrated interventions, GISCOR contributed to improving the protection, recovery, and resilience of vulnerable children and caregivers across the North-East and North-West, while strengthening community-based child protection systems and creating safer environments where children could survive, learn, develop, and thrive.



CPIMS+
TRAINING
GISCOR STAFF

42 Staffs
Trained

Health

GISCOR implemented an integrated health response aimed at improving access to lifesaving, quality primary healthcare services for conflict-affected populations. In collaboration with key partners, GISCOR delivered a coordinated package of health services within a context marked by protracted displacement, seasonal shocks, and high levels of maternal and child vulnerability.

The intervention supported a network of health service delivery alongside a dedicated mobile clinic, covering multiple health facilities, outreach sites, and clinical hubs. These service points ensured sustained access to essential healthcare for internally displaced persons, returnees, host communities, and other vulnerable populations.

Through this integrated platform, GISCOR delivered comprehensive primary healthcare services including outpatient consultations for communicable and non-communicable diseases, maternal and child health services, antenatal and postnatal care, family planning, and skilled birth attendance. Emergency and specialized services were also strengthened, including Clinical Management of Rape (CMR), ensuring survivors of sexual and gender-based violence received timely, confidential, and survivor-centered care with strengthened referral linkages.

The response further reinforced supply chain systems to ensure consistent availability of essential medicines and medical commodities across supported facilities, contributing to uninterrupted service delivery. The intervention strengthened health system capacity, improved access to essential services, enhanced emergency care for survivors of violence, and contributed to improved health outcomes among conflict-affected populations.



NUTRITION

Grassroot Initiative for Strengthening Community Resilience (GISCOR) in collaboration with NHF, WFP, PUI, and CAID, implemented an integrated nutrition response aimed at improving the nutritional status and wellbeing of conflict-affected populations in NE specifically Borno state. The intervention targeted internally displaced persons (IDPs), returnees, new arrivals, and vulnerable host communities through both facility-based and community-based nutrition service delivery approaches.

Across all locations, the intervention focused on the prevention, early detection, and treatment of acute malnutrition, while integrating infant and young child feeding (IYCF) promotion and psychosocial support to improve child survival and caregiver wellbeing. Protection principles, including dignity, confidentiality, non-discrimination, and safe referral systems, were mainstreamed across all nutrition activities.

In Monguno LGA under the NHF and PUI partnership, GISCOR strengthened nutrition service delivery through operational support to one Stabilization Centre (SC) and one Outpatient Therapeutic Programme (OTP). This support enhanced the capacity of health facilities to provide uninterrupted and quality treatment services for children suffering from Severe Acute Malnutrition (SAM). Through strengthened clinical management and routine service delivery support, affected children received lifesaving therapeutic care in line with national protocols, contributing to improved recovery outcomes.

Community-based nutrition surveillance was reinforced through Mid-Upper Arm Circumference (MUAC) screening for children aged 6–59 months in both IDP camps and host communities. This facilitated early identification of malnutrition cases and strengthened timely referral systems to OTP and Stabilization Centre services, reducing delays in treatment initiation and improving coverage of care.

In addition to treatment services, GISCOR integrated psychosocial support into nutrition programming through Mother-Baby Stimulation Corners (MBCs). These provided structured stimulation activities, counseling, and emotional support for caregivers and children, strengthening caregiver-child interaction and supporting psychosocial recovery during treatment.



NUTRITION

Preventive nutrition interventions were strengthened through Infant and Young Child Feeding (IYCF) counseling for pregnant and lactating women. Key messages focused on exclusive breastfeeding, appropriate complementary feeding, dietary diversity, continued feeding during illness, and maternal nutrition practices, leading to improved caregiver knowledge and adoption of optimal feeding practices.

In Mafa, Dikwa, and Rann/Kala Balge LGAs under the CAID partnership, GISCOR implemented complementary community-based nutrition interventions, including Blanket Supplementary Feeding Programme (BSFP) activities, MUAC screening, and IYCF promotion targeting children under five, pregnant and lactating women, and caregivers. These interventions strengthened early detection and management of acute malnutrition and improved referral linkages to appropriate nutrition services.



BEFORE INTERVENTION



AFTER INTERVENTION

A STORY OF RECOVERY: MUSA'S JOURNEY FROM MALNUTRITION TO HEALTH

Musa (not a real name), a child from Monguno, was identified by Community Health Workers during a routine community screening after signs of malnutrition were observed.

He was immediately referred to a nearby health facility for further assessment. At the facility, Musa was diagnosed with acute malnutrition and enrolled into treatment, receiving Ready-to-Use Therapeutic Food (RUTF) and other essential care.

His caregiver was also supported with counselling on proper feeding practices and the importance of adherence to follow-up visits. After several weeks of consistent treatment and monitoring, Musa showed marked improvement. During reassessment, he was confirmed to have fully recovered and was no longer malnourished. His recovery highlights the importance

WASH

Together with DRC (Northeast and Northwest) and MSF, GISCOR implemented integrated WASH interventions to improve access to safe water, sanitation facilities, and hygiene services. supported infrastructural development through borehole construction in Sabon Birni and Isa LgAs of Sokoto state, GISCOR also drove the "soft component" initiatives training of Community- Based Hygiene Promoters (CBHPs), and WASH Committees, leading hygiene awareness exercises, and executing sanitation activities such as waste management, through environmental waste clearing, and facilities' rehabilitation activities which included toilets and water sources.

To further restore dignity and safeguard public health, emergency responses delivered critical WASH NFIs and Menstrual Hygiene Management (MHM) kits to vulnerable profiled individuals/households



FOOD SECURITY & LIVELIHOOD

In collaboration with WFP and CAID, GISCOR implemented an integrated food security and livelihoods response aimed at improving food access, reducing acute food insecurity, and strengthening household resilience among conflict-affected populations. The intervention targeted internally displaced persons, returnees, new arrivals, and vulnerable host communities affected by prolonged conflict and economic vulnerability.

GISCOR delivered comprehensive food assistance interventions through a combination of cash-based transfers and in-kind food distributions. This support provided immediate relief and improved household access to basic food requirements, contributing significantly to reducing acute food insecurity among displaced and highly vulnerable households. The intervention also strengthened livelihood and household resilience by enabling affected populations to meet essential consumption needs, stabilize food access, and reduce reliance on negative coping strategies. Beneficiaries were supported to better manage limited resources in a context of persistent economic shocks and displacement-related vulnerabilities.

The project reinforced accountability and community engagement through functional Complaint and Feedback Mechanisms, ensuring that beneficiaries had safe and accessible channels to provide feedback and report concerns. Community participation remained central to implementation, strengthening trust, transparency, and ownership of assistance delivery



FOOD SECURITY & LIVELIHOOD

Across the targeted locations GISCOR continue respond broader multisectoral response focused on food security and livelihoods recovery. through General Food Distributions (GFD) and Cash-Based Transfers (CBT)/e-voucher modalities, the intervention reached significant number of vulnerable individuals that improved food access and stabilizing consumption among crisis-affected households.

The program further strengthened community accountability systems through structured engagement platforms and Complaint and Feedback Mechanisms (CFM), ensuring inclusive participation and responsiveness to community needs. These mechanisms enhanced transparency and improved the effectiveness of humanitarian assistance delivery across the targeted LGAs.

Overall, the integrated food security and livelihoods response significantly improved household food access, reduced acute food insecurity, strengthened community accountability systems, and enhanced resilience among displaced and conflict-affected populations across Mafa, Dikwa, and Rann/Kala Balge LGAs in Borno State.



Promoting community safety and participation in stabilization processes

GISCOR in collaboration with UNDP, under the Regional Stabilization Facility (RSF)-supported project, made strong contributions to community stabilization, inclusive governance, and resilience across Borno, Adamawa, and Yobe States. Community Stabilization Committees (CSCs) were established as inclusive governance platforms designed to restore trust between government and citizens in conflict-affected communities. They emerged as structured mechanisms for dialogue, coordination, and community ownership of stabilization initiatives. CSCs are typically composed of 15 to 30 members representing diverse community structures, including Local Government Authorities, the military, Civilian Joint Task Force (CJTF), hunters/vigilante groups, State Emergency Management Agency (SEMA), religious and traditional leaders, women's groups, youth associations, and persons with disabilities. CSCs are chaired by Local Government officials to ensure effective governance and alignment with state institutions, with traditional leaders providing cultural legitimacy.

The Community Security Group (CSG) was created as a specialized sub-group within CSCs to address security issues technically and confidentially. Composed of high-ranking security actors including the military, police, NSCDC, Immigration, Nigerian Customs Service, CJTF, and vigilante groups, the CSG provides a secure platform for threat assessments, patrol coordination, intelligence sharing, and rapid response mechanisms. By linking community perspectives with formal security structures, the CSG has successfully resolved localized security challenges and reinforced trust between communities and security actors.

To strengthen inclusivity, CSCs established a Women's Subcommittee composed of 50 representatives from across the community. This platform ensures that gender-specific concerns are systematically integrated into CSC deliberations, while promoting women's leadership, accountability, and participation in stabilization processes. Women's voices have been amplified in discussions on safety, protection, and access to services, enhancing the overall effectiveness of stabilization efforts.

To strengthen the functionality and visibility of the Community Stabilization Committees (CSCs), the Regional Stabilization Facility provided furnished and fully equipped desk offices across 11 strategic locations. These offices were supplied with essential items such as desks, chairs, tables, computers, printers, stationery, filing cabinets, and communication tools, ensuring that the committees had a dedicated and professional space to carry out their mandate. In addition, early warning system equipment was distributed to all RSF locations, enabling the committees and the wider community to monitor, document, and respond promptly to emerging security concerns. This investment not only enhanced the operational capacity of the CSCs but also reinforced their role as trusted structures for community engagement, conflict prevention, and stabilization.



Promoting community safety and participation in stabilization processes

Through these committees, communities gained platforms to deliberate on safety, infrastructure, livelihoods, and governance. CSCs facilitated early warning systems, peaceful resolution of disputes, and conflict-sensitive management of shared resources, contributing to safer garrison towns and reinforcing stability.

Community service projects were carefully designed and implemented in close collaboration with community members, ensuring that local priorities and perspectives guided the process. These initiatives directly promoted safety and security by addressing immediate needs such as rehabilitating public spaces, improving lighting in vulnerable areas, and supporting local infrastructure. At the same time, they fostered a strong sense of ownership and accountability, as community members were actively involved in planning, execution, and monitoring. By engaging residents in every stage, the projects not only enhanced protective environments but also strengthened trust between the organization and the community, empowering people to take collective responsibility for sustaining peace and resilience.

Overall, the RSF-supported project demonstrates clear and tangible achievements in strengthening community ownership of stabilization processes. By actively involving local committees and residents, the project has enhanced the legitimacy and sustainability of interventions. Security coordination has been significantly improved through structured engagement between community actors and local authorities, ensuring faster responses to emerging risks and better alignment with stabilization priorities. Sustainability has been embedded through the establishment and support of local governance structures, which provide continuity and accountability beyond the project's lifespan. Importantly, the initiative has promoted inclusive participation, ensuring that women and vulnerable groups are not only beneficiaries but active contributors to peacebuilding and resilience efforts. This inclusive approach reinforces social cohesion, empowers marginalized voices, and builds a stronger foundation for long-term stability.



DIGITAL LITERACY

Through ZOA Project, GISCOR successfully implemented digital literacy and skills development training programs aimed at empowering youth and community members with practical digital competencies and employability skills. Through the initiative we we're reached various institutions and communities, including students and participants from Yerwa College, Shettima Wana College of Health, College of Nursing and Health Technology, Maiduguri, College of Nursing, Maiduguri Teaching Hospital, and members of surrounding communities. The training focused on key areas including Digital Literacy, Digital Marketing, and Basic Computer Training. Participants were equipped with foundational computer knowledge, internet navigation skills, digital communication techniques, online safety awareness, and introductory digital marketing concepts designed to improve their educational and economic opportunities.



Direct Reached

645+



DIGITAL LITERACY

The program provided participants with hands-on practical learning experiences that strengthened their confidence and ability to use digital tools effectively for learning, communication, entrepreneurship, and career development.

The initiative also contributed to improving youth engagement, enhancing employability skills, and promoting digital inclusion among young people and vulnerable community members.

By investing in digital skills and technology-based learning, GISCOR and ZOA continue to support resilience building, youth empowerment, and sustainable development within conflict-affected and underserved communities.



School Students
562

Working Group Establish **1**

Indirect Reached
1,935+

Community Member **83**



During the Lunching of Digital Literacy Working Group.

Digital Literacy Training Orientation



DIGITAL LITERACY

GISCOR, in collaboration with Bibliothèques Sans Frontières (BSF) / Libraries Without Borders, has implemented the Innovative Technologies to Combat Sexual Violence Project, a forward-looking initiative designed to address Gender-Based Violence (GBV) and Conflict-Related Sexual Violence (CRSV) across Northeast and Northwest Nigeria. The project leverages digital innovation to strengthen prevention, response, and awareness, while promoting learning, creativity, and digital inclusion among conflict-affected populations.

Through the deployment of safe digital tools, interactive learning platforms, and community-based digital access points, the intervention has expanded access to critical information on GBV prevention, survivors' rights, referral pathways, and available services. Women, girls, and young people have been empowered with knowledge and skills to safely navigate digital spaces, report risks, and access life-saving information. The initiative also integrates creative and educational content to foster engagement, resilience, and psychosocial well-being.

In addition, the project strengthens community-based protection systems by linking digital platforms with existing GBV response structures, ensuring that information shared through digital tools translates into real-time referrals and support. Capacity building for local facilitators and community focal persons has enhanced the sustainability of the intervention and improved the safe use of technology in humanitarian settings.

Overall, the collaboration between GISCOR and BSF has significantly contributed to advancing innovative, tech-driven protection approaches, bridging the digital divide, and reinforcing efforts to prevent and respond to GBV and CRSV in some of the most vulnerable and hard-to-reach communities in Nigeria.

SESSION THROUGH DIGITAL DEVICES



Madagali Sokoto



The Just Transition to Solar Electric Cooking (ECooking)

The Just Transition to Solar Electric Cooking (ECooking) Pilot in Monguno LGA, Borno State was implemented by Grassroot Initiative for Strengthening Community Resilience (GISCOR) in partnership with **Mission East**, and **Lastmile Climate**, with key technical and operational partners including **ECOCA Pesitho** and **CSR Solution**. The intervention was supported through humanitarian clean energy and resilience-focused funding aimed at improving access to sustainable cooking solutions for vulnerable displacement-affected populations in northeastern Nigeria.

The project directly supported highly vulnerable households, with 168 ECOCA solar electric cooking units successfully installed and operational during the implementation period. We conducted awareness sessions, community demonstrations, sensitization activities, and practical cooking demonstrations conducted across targeted IDP camps and host communities in Monguno LGA.



Through the Baseline and endline assessments involving households across treatment and control groups revealed significant improvements in household well-being, safety, and resilience as a result of the intervention. The project achieved a 98% adoption rate among participating households, while 92% of beneficiaries integrated the cookstoves into their daily cooking practices, demonstrating strong acceptance and sustained use of the technology.



The Just Transition to Solar Electric Cooking (ECooking)

The intervention significantly reduced household dependence on firewood and charcoal, resulting in notable reductions in cooking fuel expenditure. Prior to the intervention, households spent an average of approximately **₦11,964** monthly on traditional cooking fuels. Following the introduction of solar electric cooking, many households reported reduced fuel-related expenses, allowing families to redirect limited financial resources toward food, healthcare, education, and other essential needs.

The project also contributed to improved food security outcomes. At baseline, **72.1%** of households reported skipping meals due to lack of cooking fuel, while **41.2%** reported selling humanitarian food rations to purchase firewood or charcoal. Endline findings showed a reduction in these negative coping mechanisms, highlighting the role of affordable cooking energy in stabilizing household food consumption and protecting humanitarian assistance from diversion.

From a protection perspective, the intervention significantly reduced exposure to risks associated with firewood collection. Prior to the project, **39.7%** of surveyed households reported experiencing physical, verbal, or sexual abuse linked to fuel collection or purchasing activities. Women and girls, who were primarily responsible for collecting firewood, faced the highest exposure to insecurity and exploitation risks. By reducing reliance on traditional biomass fuels, the project enabled households to minimize risky fuel collection trips, thereby improving safety and reducing protection concerns within affected communities.

Health outcomes also improved considerably. Reduced exposure to indoor smoke and air pollution contributed to lower incidences of respiratory problems, coughing, eye irritation, and other smoke-related illnesses among primary cooks, particularly women and children. Beneficiaries reported improved comfort while cooking and healthier household environments as a result of using the **ECOCA** solar cookstoves.

Sustainability, and resilience for vulnerable populations living in displacement-affected contexts.

The intervention further strengthened household resilience and livelihoods. Beneficiaries reported saving significant time previously spent searching for fuel, allowing greater participation in childcare, household responsibilities, community activities, and income-generating opportunities. Approximately **12%** of participating households also began using the solar cookstoves for small-scale livelihood activities, demonstrating the economic potential of clean cooking technologies within humanitarian settings.

Overall, the pilot demonstrated that access to clean and affordable cooking energy can create transformative improvements in safety, dignity, health, food security, environmental s



Stakeholders Endorse Scale-Up of The Just Transition to Solar Electric Cooking (Ecooking) in Borno State



GISCOR, alongside Mission East, Pesitho Denmark, and CSR Solutions Lagos, conducted stakeholder engagement visits to key government institutions in Maiduguri to support the scale-up of the Just Transition to Solar Electric Cooking Project. Stakeholders commended the initiative for promoting clean cooking, environmental protection, and community resilience, while expressing strong support for expanding the intervention across Borno State.



VOLUNTARY SECURITY OUTFIT (VSO)

Our partnership with UNDP, the European Union, and the Borno State Security Trust Fund (BSSTF), recorded significant achievements during the 2025 reporting period. The intervention successfully trained and supported 600 VSO members across Maiduguri, Jere, Bama, Gwoza, and Monguno LGAs in market-relevant vocational skills including solar installation and repair, charcoal briquette production, interlock brick making, pottery, and painting and decoration. With an average attendance rate of 95%, the project demonstrated strong community ownership, high beneficiary commitment, and effective coordination among implementing partners and local security structures.

The training programme delivered strong technical and entrepreneurial outcomes, with over 90% of participants demonstrating improved practical competencies and 82% expressing readiness to establish income-generating activities. Through a structured combination of classroom instruction, hands-on practice, and entrepreneurship training, beneficiaries developed both technical expertise and business planning skills. Notably, 23.5% of participants were women, reflecting meaningful progress in gender inclusion within traditionally male-dominated security-related groups. The provision of start-up kits and seed grants further enabled immediate transition from training to practice, supporting early enterprise formation across multiple skill areas.

At the household and community level, the project generated measurable socio-economic impact. Beneficiaries reported increased income opportunities, reduced dependency on insecurity-linked livelihoods, and improved financial stability. The intervention contributed to enhanced social cohesion by supporting the transition of VSO members from informal security roles into productive civilian livelihoods, thereby strengthening community reintegration and reducing vulnerability. Emerging cooperatives and small enterprises among graduates further demonstrate the sustainability of the model and its potential for scaling within stabilization and recovery frameworks in Borno State.

Overall, the project delivered strong value for money and transformative impact through efficient resource utilization, strategic partnerships, and adaptive implementation approaches. By equipping 600 vulnerable individuals with practical skills, business knowledge, and start-up capital, GISCOR and its partners have contributed meaningfully to stabilization, resilience building, and economic recovery in conflict-affected communities. The initiative stands as a scalable model for integrating livelihood development within peacebuilding and post-conflict recovery programming in Northeast Nigeria.



Enhancing The Economic Recovery And Livelihood Restoration Support To Displaced And Host Populations By Supporting Community-led Initiatives, Primarily Meant To Increase Self-sufficiency Among The most Vulnerable, As Well As Contributing To Economic Interdependence and Social Cohesion.

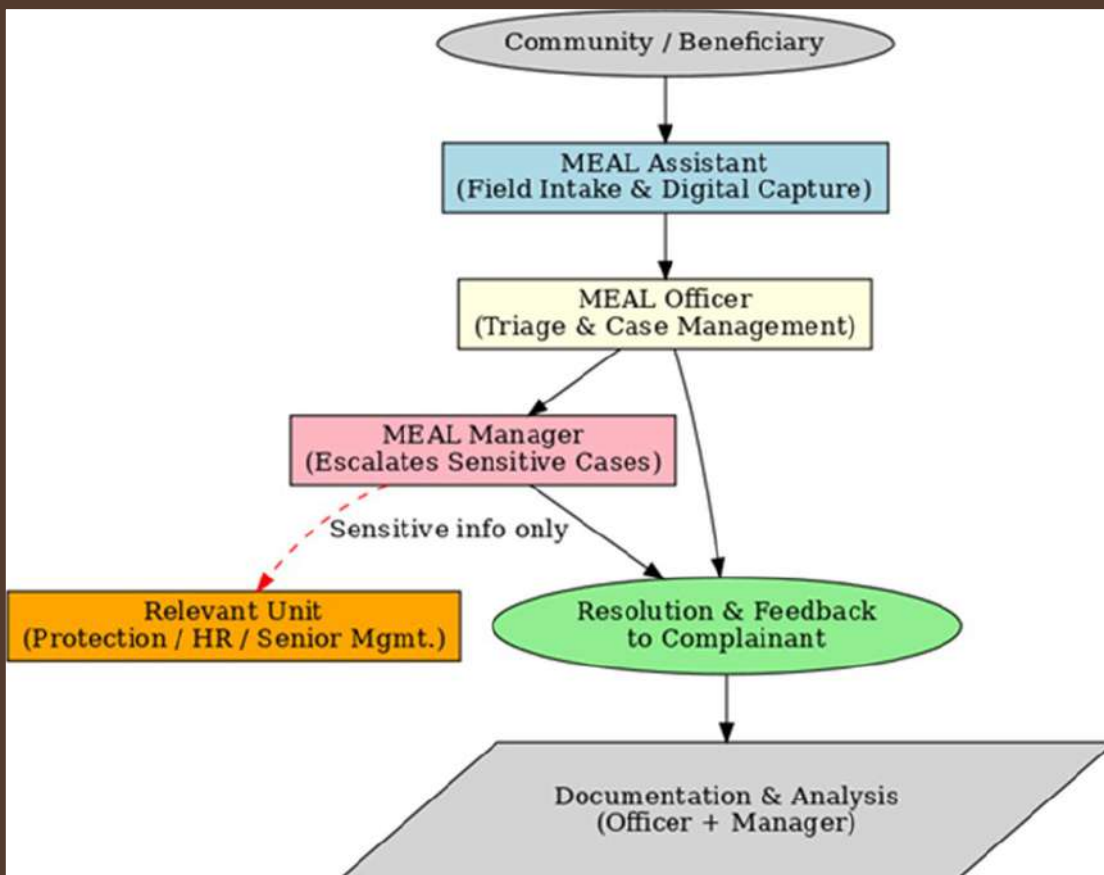
The SIDPIN project implemented by **GISCOR** in Damaturu LGA, Yobe State, in collaboration with **UNHCR** and key stakeholders, significantly strengthened community-based protection systems, social cohesion, and inclusion for IDPs, returnees, and host communities. The intervention contributed to improved access to services, enhanced local capacity, and promoted peaceful coexistence in a context of protracted displacement and limited basic services.

Key achievements included the rehabilitation of **two community infrastructures** (a recreational centre and a Women and Girls' Dignity Centre), the training of **frontline government and community actors (50% female participation)** on protection and case management, and the conduct of **5 dialogue sessions** to promote peaceful coexistence. A service mapping exercise and establishment of community management committees further strengthened coordination, accountability, and sustainability.



The whole project improved protection awareness, strengthened referral systems, and enhanced community resilience by empowering local actors and creating safe, inclusive spaces. GISCOR's intervention shifted protection response toward a more preventive and community-led approach, laying a strong foundation for sustainable social cohesion and durable solutions in Damaturu.

MONITORING, EVALUATION, ACCOUNTABILITY AND LEARNING (MEAL)



GISCOR maintained strong monitoring and accountability systems throughout 2025 to ensure quality implementation and effective service delivery.

Regular monitoring visits, post-distribution monitoring, data verification exercises, and community consultations were conducted across intervention locations.

Complaints and feedback mechanisms enabled communities to safely raise concerns, provide feedback, and contribute to program improvement.

Learning and adaptive programming approaches helped strengthen program quality and responsiveness to emerging humanitarian needs.

ACKNOWLEDGMENTS

GISCOR expresses its deepest appreciation to all donors, partners, government institutions, UN agencies, international and national humanitarian organizations, community leaders, volunteers, and affected communities whose collaboration, trust, and commitment contributed immensely to the successful implementation of humanitarian interventions throughout 2025. The collective efforts, technical support, coordination, and financial contributions of our partners enabled the organization to deliver life-saving assistance and resilience-building interventions to vulnerable populations across Northeast and Northwest Nigeria. The organization sincerely acknowledges the strong collaboration and support provided by government ministries, departments, and agencies at federal, state, and local levels, whose engagement strengthened coordination, access, and effective service delivery within affected communities. GISCOR also appreciates the continued partnership and cooperation of traditional leaders, religious leaders, women groups, youth representatives, and community-based structures whose active participation enhanced community acceptance, accountability, and ownership of interventions. Special recognition is extended to frontline humanitarian workers, project staff, volunteers, and community mobilizers who demonstrated exceptional dedication, professionalism, and resilience while working in challenging and often high-risk operational environments. Their unwavering commitment, compassion, and sacrifices made it possible to reach internally displaced persons (IDPs), returnees, and vulnerable host communities with critical protection services, healthcare, nutrition support, WASH interventions, food assistance, and livelihood opportunities. GISCOR further appreciates the courage and resilience of the affected communities themselves, whose strength, cooperation, and participation continue to inspire humanitarian action and community recovery efforts. The organization remains committed to strengthening these partnerships and sustaining collaborative efforts aimed at protecting lives, restoring dignity, and building resilient communities across Nigeria. As GISCOR looks toward the future, the organization remains grateful for the continued trust and support of all stakeholders and reaffirms its commitment to accountable, inclusive, and community-driven humanitarian programming that leaves no one behind.

SUCCESS STORIES

RESTORING TRUST AND SAFETY THROUGH COMMUNITY-LED STABILIZATION

In Banki community, rising insecurity affecting farmers and vulnerable groups had created fear and weakened trust between the community and security actors.

Through GISCOR's support to the Community Stabilization Committee (CSC), a structured dialogue platform was established, allowing community members, women, and security actors to jointly address safety concerns. Women representatives raised issues of abductions during farming activities, which were escalated through the CSC and Community Security Group (CSG).

In response, security actors introduced organized farmer escorts and increased patrols in high-risk areas, which significantly reduced incidents and improved access to farmlands.

This intervention restored community confidence, strengthened collaboration with security agencies, and demonstrated the effectiveness of inclusive, community-led stabilization in improving safety and resilience.

FROM BLINDNESS TO SIGHT CASH SUPPORT TURNED HOPE INTO VISION.

A man living with blindness was identified by the GISCOR team and referred to Mercy Corps for multipurpose cash assistance. With this support, he was able to undergo a critical surgery that restored his sight.

The impact was life-changing: from dependence and vulnerability, he regained independence, dignity, and hope.

In a powerful gesture of gratitude, he later visited the protection desk to personally express his appreciation his restored vision symbolizing not just medical recovery, but the triumph of resilience and the power of humanitarian support.



16 Days Of Activism



Stronger Together: GISCOR Joins Global Movement for 2025 16 Days of Activism Against GBV

GISCOR commemorated the 2025 16 Days of Activism Against Gender-Based Violence across its operational locations in Northeast Nigeria under the theme “UNiTE! Invest to End Digital Violence Against Women and Girls.” The campaign engaged women, girls, men, boys, and community leaders through community dialogues, awareness sessions, school outreaches, drama, and advocacy activities aimed at strengthening GBV prevention and response.

The commemoration strengthened community awareness on different forms of GBV, including digital violence, early marriage, and intimate partner violence, while promoting positive masculinity, survivor support, and access to services. Through collaboration with key partners, GISCOR reinforced referral pathways and community-based protection mechanisms. Overall, the campaign enhanced community ownership of GBV prevention efforts and reaffirmed GISCOR's commitment to protecting the rights, dignity, and safety of women and girls in conflict-affected communities.



Celebrating Impact, Honouring Excellence: GISCOR Recognizes Outstanding Humanitarian Service at End-of-Year Celebration



GISCOR's end-of-year celebration featured an award segment recognizing outstanding staff for their exceptional performance and dedication to humanitarian service delivery. Staff were honored for excellence in Child Protection, GBV, General Protection, and multisectoral interventions, as well as for professionalism, innovation, timely reporting, and strong community engagement in challenging contexts. The recognition fostered team spirit, motivation, and a culture of accountability and excellence, reinforcing GISCOR's commitment to impactful and resilient humanitarian service delivery.

2025 End of The CELEBRATION

10years Partnership with UNHCR



GISCOR and UNHCR Mark 10 Years of Lifesaving Humanitarian Partnership in Northeast and Northwest Nigeria.

GISCOR celebrated 10 years of partnership with UNHCR, marking a decade of collaboration in delivering lifesaving protection and multisectoral assistance to displaced persons, refugees, returnees, and host communities in Northeast Nigeria. The partnership has strengthened child protection, GBV response, access to essential services, and community-based protection systems, reaching thousands of vulnerable people and enhancing resilience. The milestone also provided an opportunity to reflect on progress and reaffirm commitment to sustaining and expanding humanitarian impact in the years ahead.



Strengthening Accountability Through Field Monitoring and Community Engagement

The **GISCOR** Programme Team conducted regular field monitoring missions across project locations as part of annual reporting and impact assessment activities. During these visits, the team engaged community leaders and key stakeholders in structured discussions to review project progress, measure outcomes, and gather feedback on service delivery. These engagements strengthened accountability, promoted community participation, and provided critical insights to inform program adjustments and enhance the effectiveness and relevance of humanitarian interventions throughout the year.



PARTNERSHIPS AND COLLABORATION



GISCOR worked closely with government institutions, UN agencies, international NGOs, local organizations, and community structures to deliver coordinated humanitarian responses.

Strategic collaboration strengthened operational effectiveness, resource mobilization, referral systems, and community engagement across sectors.

The organization continued to strengthen partnerships with humanitarian actors and relevant government agencies.

